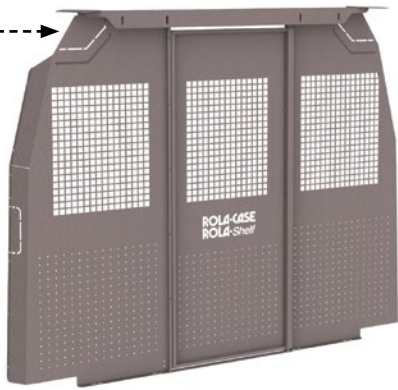


⚠ ATTENTION: PLEASE READ ALL INSTRUCTIONS BEFORE ASSEMBLING/INSTALLING THIS PRODUCT

RSCGBCX19



⚠ WARNING

ANY ALTERATIONS, UNINTENDED OR UNAPPROVED WORK/USE OF THIS PRODUCT COULD CREATE A HAZARDOUS CONDITION THAT CAN CAUSE DEATH, PERSONAL INJURY OR PROPERTY DAMAGE.

BEFORE YOU BEGIN:

- THE AVERAGE EXPECTED INSTALL TIME FOR THIS PRODUCT IS **40 MINUTES**
- READ ALL THE INSTRUCTIONS BEFORE ASSEMBLY & INSTALLATION
- ENSURE YOU HAVE SOME ASSISTANCE FROM A SECOND PERSON TO AVOID VEHICLE DAMAGE OR ANY PERSONAL INJURY
- BE AWARE ON THE LOCATION OF VEHICLE WIRING, GAS TANKS, GAS LINES, BRAKE LINES, & ANY OTHER IMPORTANT ITEMS
- ENSURE IT IS SAFE BEFORE DRILLING OR CUTTING ANYWHERE ON THE VEHICLE & INSTALLING ANY OF OUR PRODUCTS
- CONFIRM YOU HAVE ALL THE NECESSARY PARTS, TOOLS, EQUIPMENT, & TIME REQUIRED BEFORE COMMENCING

PART No. RSCGBCX19 can be installed on the following vehicles:

- 1997-2014 CHEVROLET EXPRESS 1500, 135" & 155" W/B
- 1997-2021 CHEVROLET EXPRESS 2500, 135" & 155" W/B
- 1997-2021 CHEVROLET EXPRESS 3500, 135" & 155" W/B
- 1997-2014 GMC SAVANA 1500, 135" & 155" W/B
- 1997-2021 GMC SAVANA 2500, 135" & 155" W/B
- 1997-2021 GMC SAVANA 3500, 135" & 155" W/B

TOOLS REQUIRED:



⚠ ATTENTION

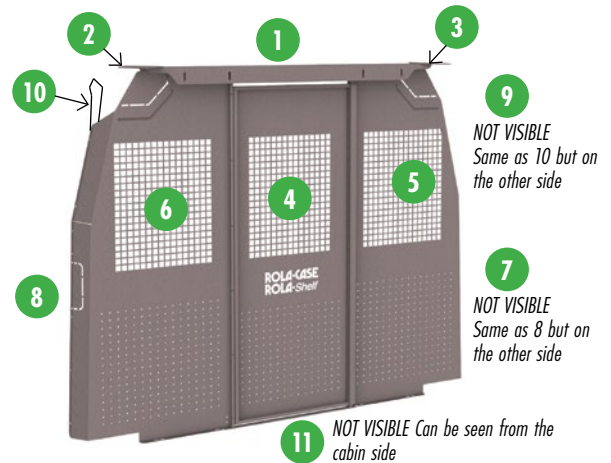
IMAGES USED IN THIS GUIDE MAY VARY SLIGHTLY DEPENDING ON YOUR MODEL

HARDWARE INCLUDED



The RolaCase Partition Kit for the Chevrolet Express / GMC Savana (Part#: RSCGBCX19) is made up of the following 11 parts that need to be located and assembled together with the hardware provided:

1. Upper Cross Mount Beam
2. L/H Upper End Bracket
3. R/H Upper End Bracket
4. Centre Panel
5. R/H side Panel
6. L/H side Panel
7. R/H setback pinch-weld seal
8. L/H setback pinch-weld seal
9. R/H Upper Stabilizer Bracket
10. R/H Upper Stabilizer Bracket
11. Lower Brace



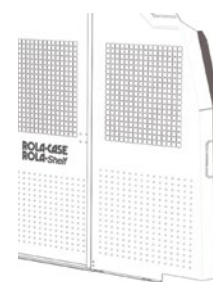
HARDWARE	QTY
HEX HEAD BOLTS M8x20	12
PAN PHILLIPS BOLTS M6x20	6
PAN PHILLIPS BOLTS M6x12	18
PAN PHILLIPS BOLTS M6x16	4
NYLOC NUTS M8	8
NYLOC NUTS M6	24
SPRING WASHERS M6	4
FLAT WASHERS M6	2
SPRING WASHERS M8	4
RIVET NUT M8	4
RIVET NUT M6	2
SPONGE PINCHWELD	2
SMALL PINCHWELD	1

To upgrade your bulkhead to a swing door or deep setback order the following:

- Centre Door Kit (Part#: RSCGBDHK)
This converts the fixed Centre Panel into a Swinging & Lockable Door for cabin to cargo access
- Deep Setbacks (Part#: RSCGBSBCX19)
This converts the default partition to sit an additional 2.5" in deeper for greater recline in the front seats



RSCGBDHK



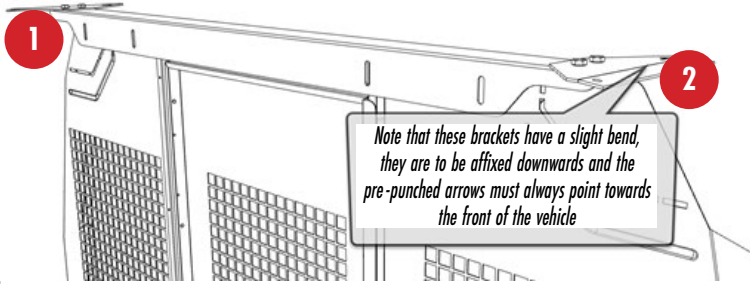
RSCGBCX19

⚠ ATTENTION: PLEASE READ ALL INSTRUCTIONS BEFORE ASSEMBLING/INSTALLING THIS PRODUCT

⚠ WARNING

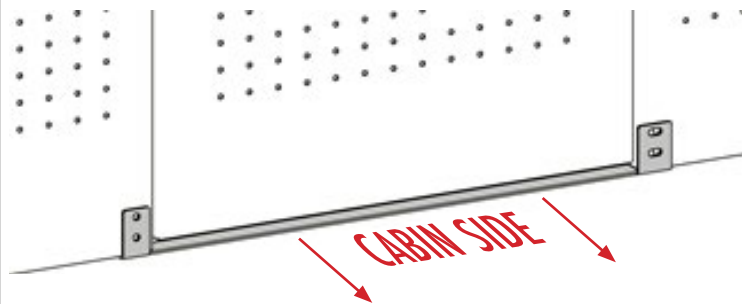
ANY ALTERATIONS, UNINTENDED OR UNAPPROVED WORK/USE OF THIS PRODUCT COULD CREATE A HAZARDOUS CONDITION THAT CAN CAUSE DEATH, PERSONAL INJURY OR PROPERTY DAMAGE.

A Begin by locating the Upper Cross Beam and the two Upper End Brackets. Assemble the three products together loosely using 4x "M8 x 20mm" bolts and Nyloc nuts provided, refer to image below:



B Secure the assembled Upper Beam to the top inner "cant rail" frame of the vehicle using 4x "M6 x 20mm" bolts and Nyloc nuts provided. Note that on each side of the Upper End Bracket, one of the M6 bolts will actually go through a factory captive nut that is already part of the cant rail which is roughly located above each "B pillars". Ensure you affix the beam with the arrows on the side brackets pointing towards the

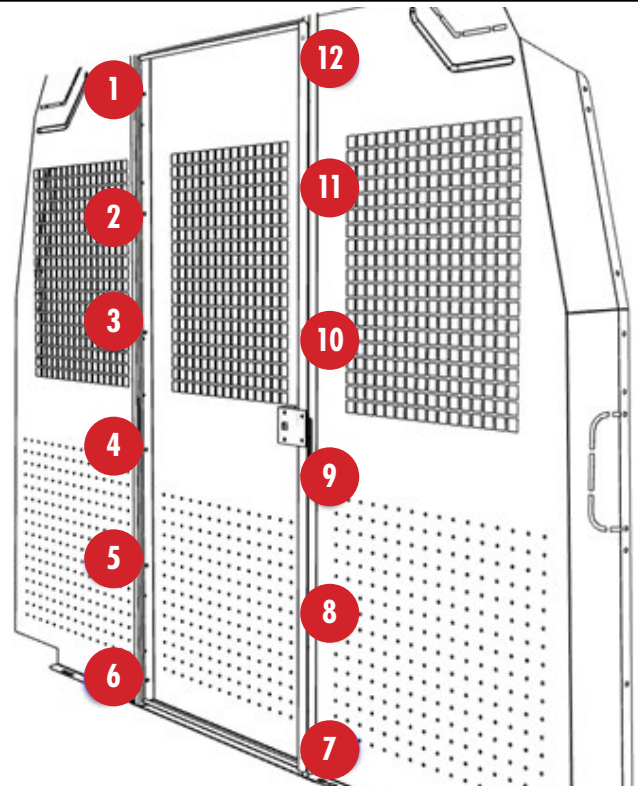
C Secure the Lower Brace to the bottom of the partition using four M6 x 16mm bolts and Nyloc nuts. The two M6 flat washers go on the slotted end of the lower brace, refer to image below:



D Locate the Centre Panel, R/H side Panel, and the L/H side Panel. If you have purchased the "Swing Door & Lock Kit", please follow the instructions in that kit, otherwise assemble the three products together using 12x "M6 x 12mm" bolts and Nyloc nuts provided, refer to next image

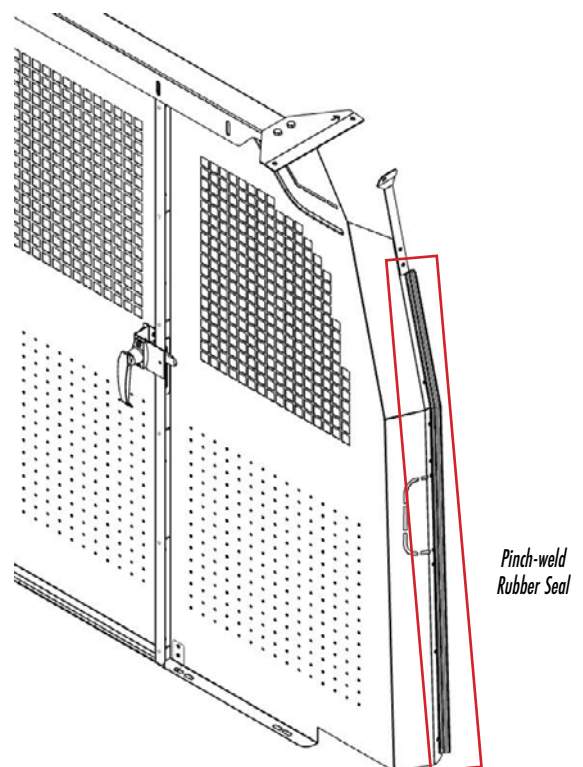
⚠ ATTENTION

IMAGES USED IN THIS GUIDE MAY VARY SLIGHTLY DEPENDING ON YOUR MODEL



E If you have purchased the optional "Deep Setback Kit", please attach them to the standard setbacks now using the hardware and instructions in that kit, otherwise move onto the next step

F Locate the R/H setback pinch-weld seal, and the L/H setback pinch-weld seal. Secure to the partition by squeezing the product over the metal edge of both corresponding side panels ensuring the oval rubber sponge is offset outward. Refer to image below



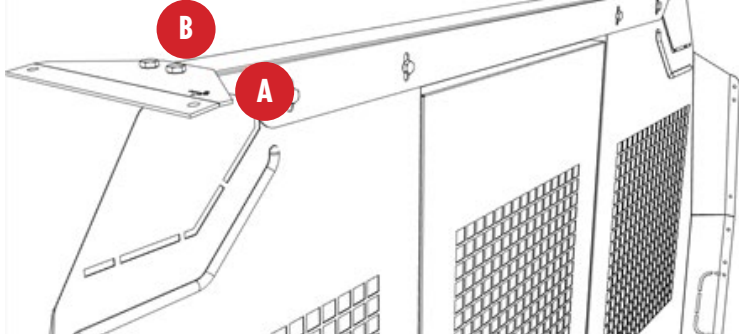
⚠ ATTENTION: PLEASE READ ALL INSTRUCTIONS BEFORE ASSEMBLING/INSTALLING THIS PRODUCT

⚠ WARNING

ANY ALTERATIONS, UNINTENDED OR UNAPPROVED WORK/USE OF THIS PRODUCT COULD CREATE A HAZARDOUS CONDITION THAT CAN CAUSE DEATH, PERSONAL INJURY OR PROPERTY DAMAGE.

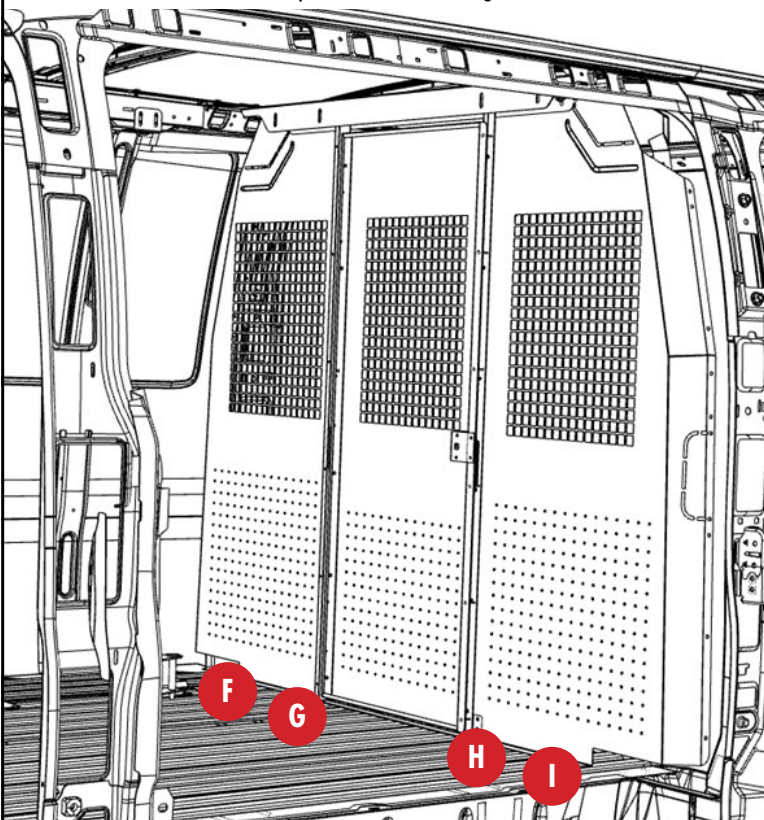
G Now that the partition unit is fully assembled, use two people to lift the assembly into the van via the side door and position into place

H Secure the assembled partition to the previously installed Upper Beam using 4x "M8 x 20mm" bolts and Nyloc nuts provided. Ensure you assemble the partition to the inside of face "A" on the cross beam which would be closest to the front of the vehicle. (refer to image below) Secure the assembled partition to the previously installed Upper Beam using 4x "M8 x 20mm" bolts and Nyloc nuts provided. Ensure you assemble the partition to the inside of face "A" on the cross beam which would be closest to the front of the vehicle, refer to image below



I Mark out 4 positions on the factory corrugated floor where you will secure the base of the Left and Right side partition panels. Note that there are 4 slotted holes per side however you will only use 2 points per side where the high ridges of the floor meets up against the base of the partition panels. Refer to the "F to I" red bubble points in the next image

J Slightly slide the partition out of the way and drill the 4 points on the factory floor that you previously marked out and secure the 4x "M8" Rivet Nuts supplied. These would be the "F to I" red bubble points in the next image



⚠ ATTENTION

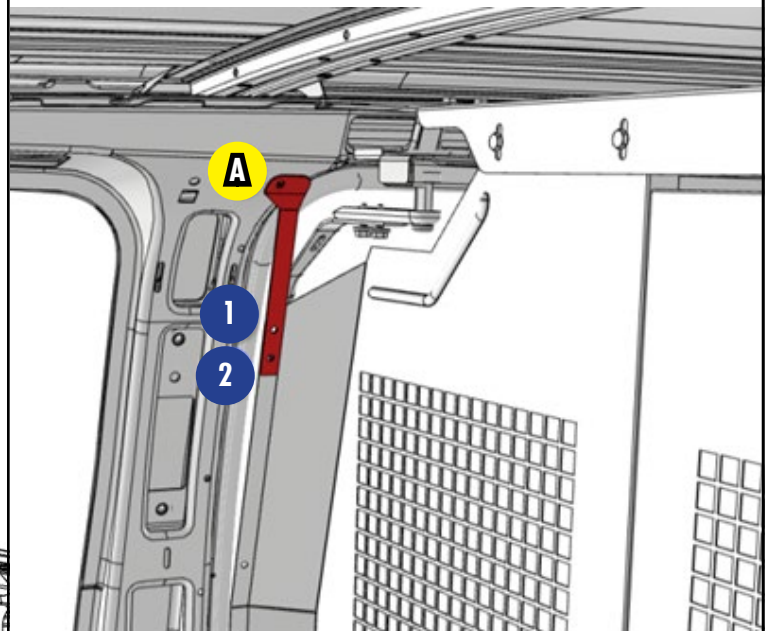
IMAGES USED IN THIS GUIDE MAY VARY SLIGHTLY DEPENDING ON YOUR MODEL

K Use two people to reposition the partition in the correct and final resting place, then insert the 4x "M8 x 20mm" bolts and spring washers through the side panels and into the Rivet Nuts on the floor of the vehicle. There are 2 bolts per side (4 bolts in total) Refer to the "F to I" red bubble points in the image above

L Locate and secure the two upper stabilizer brackets to each Left and Right setback wing via 2x "M6 x 12mm" pan phil bolts and Nyloc nuts supplied, refer to the "1 and 2" blue bubble points below

M Mark out the pre-punched hole on the upper stabilizer brackets where they meet the upper "B" pillars

N Drill the 2 points on the factory upper "B" pillar that you previously marked out and secure the 2x "M6" Rivet Nuts supplied, this would be the yellow bubble point "A" in the image below



O Insert the 2x "M6 x 20mm" pan phil bolts and ¼ spring washers through the upper stabilizer brackets and into the rivet nuts installed in the previous step

P Go back through and tighten all bolts securing the partition assembly to the vehicle

ROLA-CASE
ROLA-Shelf

For further details please go to www.rolacase.com